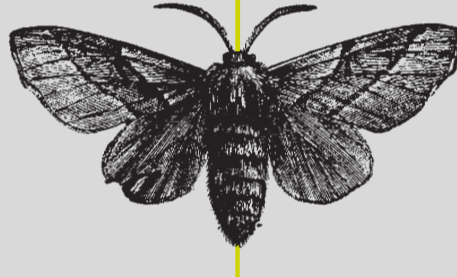


F.C.M. PheroLure[®]

Reg No. L7875

Act No 36 of 1974

PheroLure[®]



A Plastic lure containing female False codling moth (*Thaumatotibia leucotreta*) pheromone for the monitoring of False codling moth.

Active ingredient:

(E) – 7 - dodecenyl acetate	12.5 mg / lure
(E) – 8 – dodecenyl acetate	10.4 mg / lure
(Z) – 8 – dodecenyl acetate	2.1 mg / lure

Content: 1 x 25 mg Clear plastic lure

Registration holder:

Insect Science (Pty) Ltd
Co. Reg No. 2000/022528/07
Private Bag X 4019
Postnet Suite # 378
Tzaneen
0850
Tel: + 27 15 307 1391
www.insectscience.co.za

Batch No

Date of manufacture



Warnings:

- Store in a refrigerator at a temperature below 4°C, but do not freeze.
- Store away from food and feed.
- Keep out of reach of children, uninformed persons and animals.

Although this product has been extensively tested under a large variety of conditions, the registration holder does not warrant that it will be efficacious under all conditions, because the action and effect thereof may be affected by factors such as abnormal climatic and storage conditions; as well as by the method, time and accuracy of use. The registration holder furthermore does not accept responsibility for lack of performance of the remedy concerned due to failure of the user to follow the label instruction or to the occurrence of conditions that could not have been foreseen in terms of the registration. Consult the supplier in the event of any uncertainty.

Precautions:

- Destroy empty sachet and do not re-use for any other purpose.
- Destroy used plastic lure. Do not leave in the orchard or any other place.

Use Limitations:

- Abnormally dry, wet, windy or cold conditions may reduce the efficacy of the lure.
- Under normal conditions the Yellow delta trap and lure will attract male false codling moths for a period of approximately 28 - 30 weeks.
- The purpose of this attractant is only to monitor false codling moth populations and dynamics in the crops indicated and not as a control measure.

Directions for Use:

- Use only as directed.

Placement of lure:

- The **F.C.M PheroLure®** is designed for use in an **Insect Science Yellow Delta Trap®** together with an **Insect Science Sticky Liner**.
- To assemble the **Insect Science Yellow Delta Trap®**, fold the two longer outside flaps of the trap inwards toward the centre and slide the two horizontal slots through the diagonal openings.
- Open the **Insect Science Sticky Liner** and slide onto the bottom of the trap.
- Close the trap by bending the two horizontal flaps on the side of the trap to a vertical position.
- Remove the **F.C.M. PheroLure®** from the foil sachet.
- Push the galvanized wire through the two open holes on top of the trap and suspend the lure from the wire on the inside of the trap.
- Bend the wire to form a hook.

Positioning the trap in the field:

Fields should be divided up into monitoring areas of approximately 5 hectares. This is the maximum area that can be monitored by a single trap. The trap should be placed in the centre of the 5 ha area.

Placement of the trap in the orchard:

- Orchards should be divided up into monitoring areas of approximately 4 - 5 hectares, this is the maximum area that can be monitored by a single trap.
- The trap should be placed in the middle of the 4 - 5 ha area.

- A higher trap density may be necessary where the orchard is not uniform in shape, where there are steep slopes and gulleys or when tree growth is very dense.
- Prevailing winds may also affect the trap effectiveness and therefore a higher density may be necessary.

Placement of the trap in the tree:

- Suspend the trap on the western side, in the top third of the tree using the wire supplied.
- Ensure that the trap is not hung in the working row to avoid mechanical damage from tractors etc.
- Remove all leaves and branches that may obstruct entrance to the trap.
- Place trap in the direction of the prevailing winds to maximise spreading of the pheromone.
- Identify every trap with a number for reference and recording purposes.

Timing of trap placement:

- Place traps out at the beginning of the production season.

Trap maintenance:

- The sticky liners must be stirred regularly to maintain stickiness.
- Dust, insect residues, leaves etc. on the sticky liner may reduce the efficiency of the trap if not stirred.
- Lures should be replaced every 28 - 30 weeks.
- Remove the used lures from the orchard and destroy them.
- Unless the sticky liners are in a very good condition, it is recommended that they are replaced every 6 - 8 weeks.

Monitoring method:

- It is imperative that trap catches be recorded weekly and preferably on the same day each week.
- Record the number of moths caught, the trap number and date.
- After false codling moth counts have been recorded, the moths must be removed from the sticky liner.
- Stir the glue even if no moths have been caught.

Interpretation of trap counts:

- The number of moths caught is an indication of population pressure and dynamics thus consultation with your local pest management advisor for accurate interpretation of the moth counts is advisable.

PheroLure ® = registered trademarks of Insect Science (Pty) Ltd

Insect Science (Pty) Ltd = Copyright of this document is reserved. All unauthorized reproduction is forbidden.